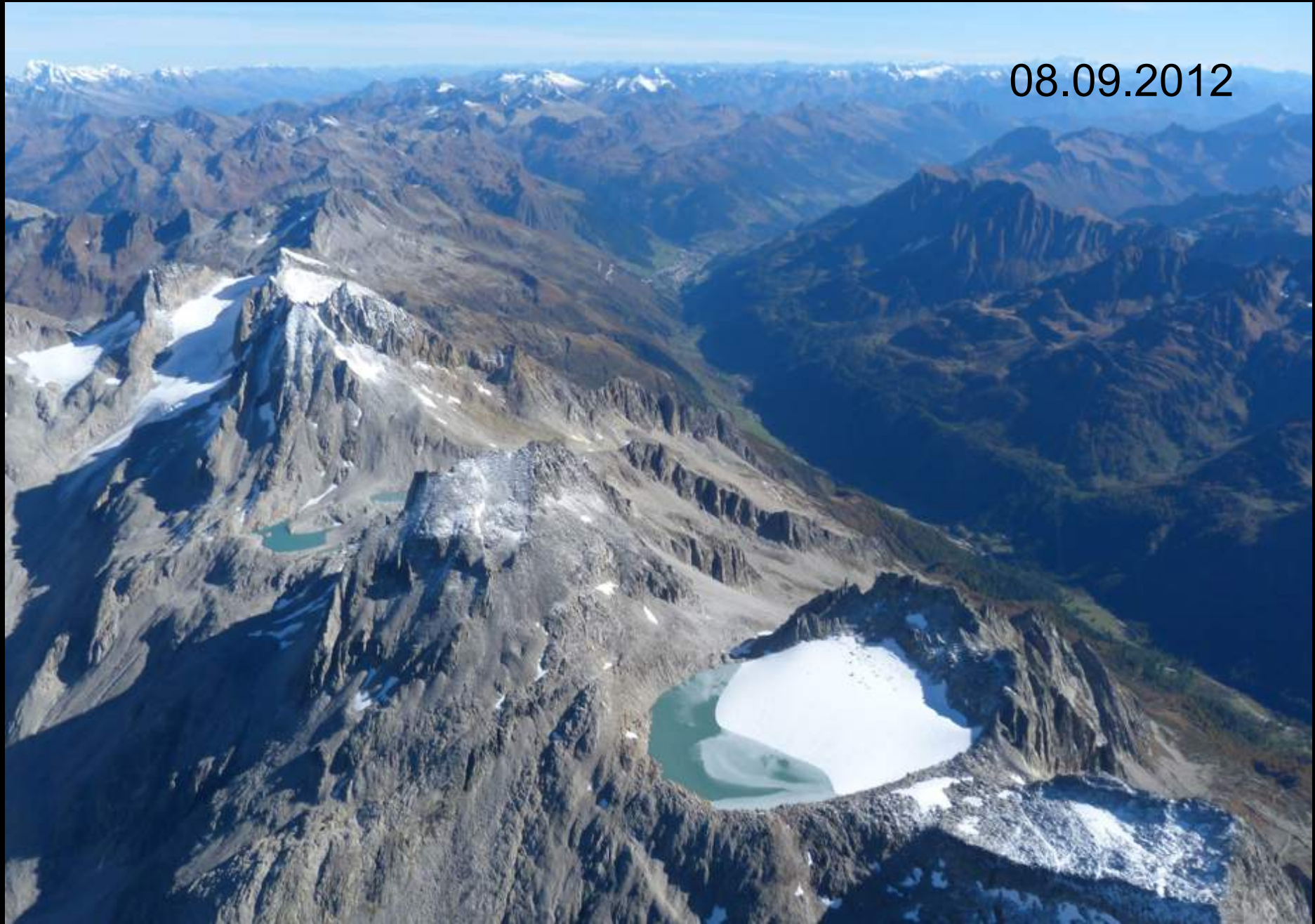








08.09.2012





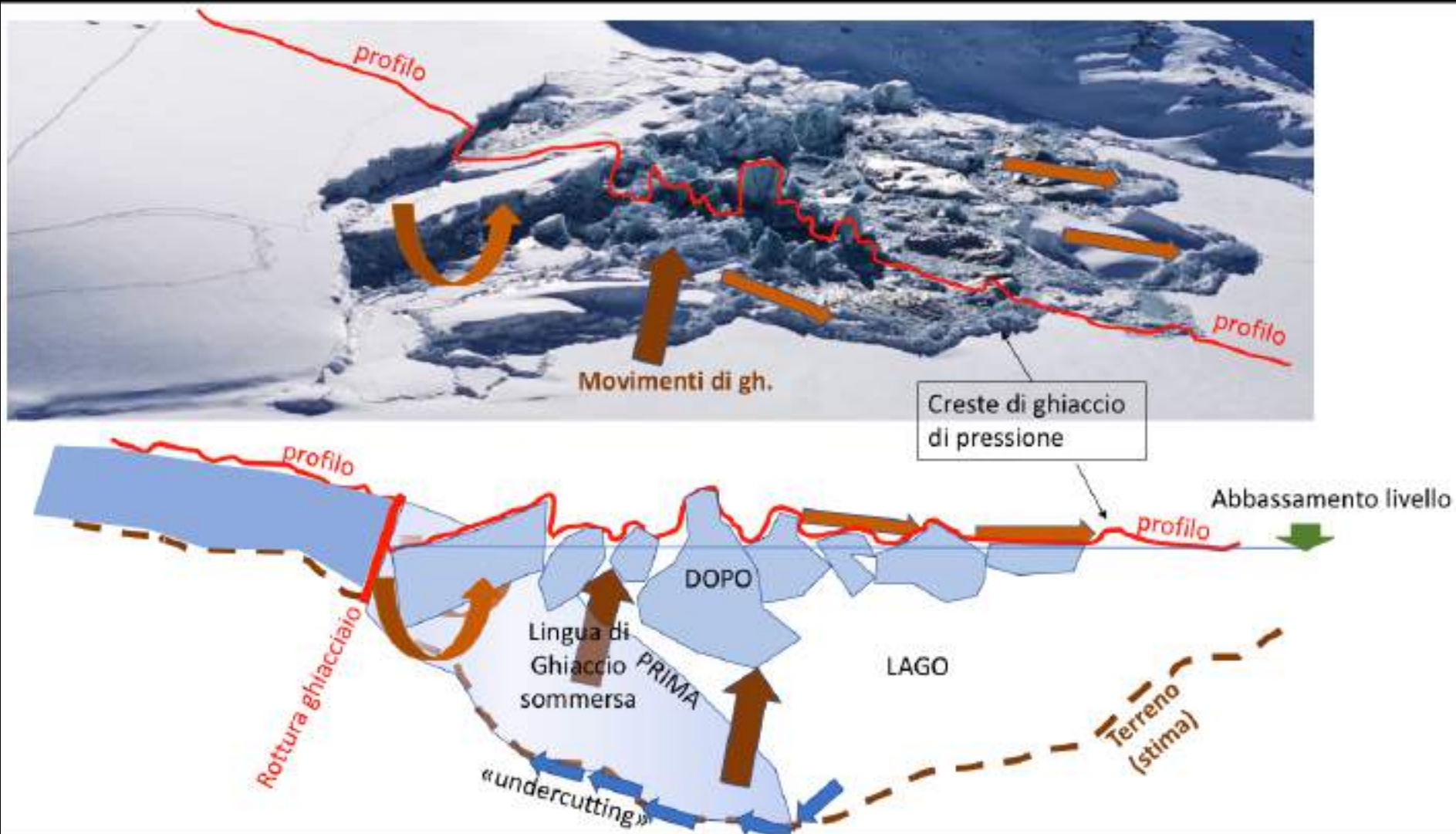
Luglio '20, G.Valenti



Agosto '20, M.Bognuda

29.11.'20, J.Vismara





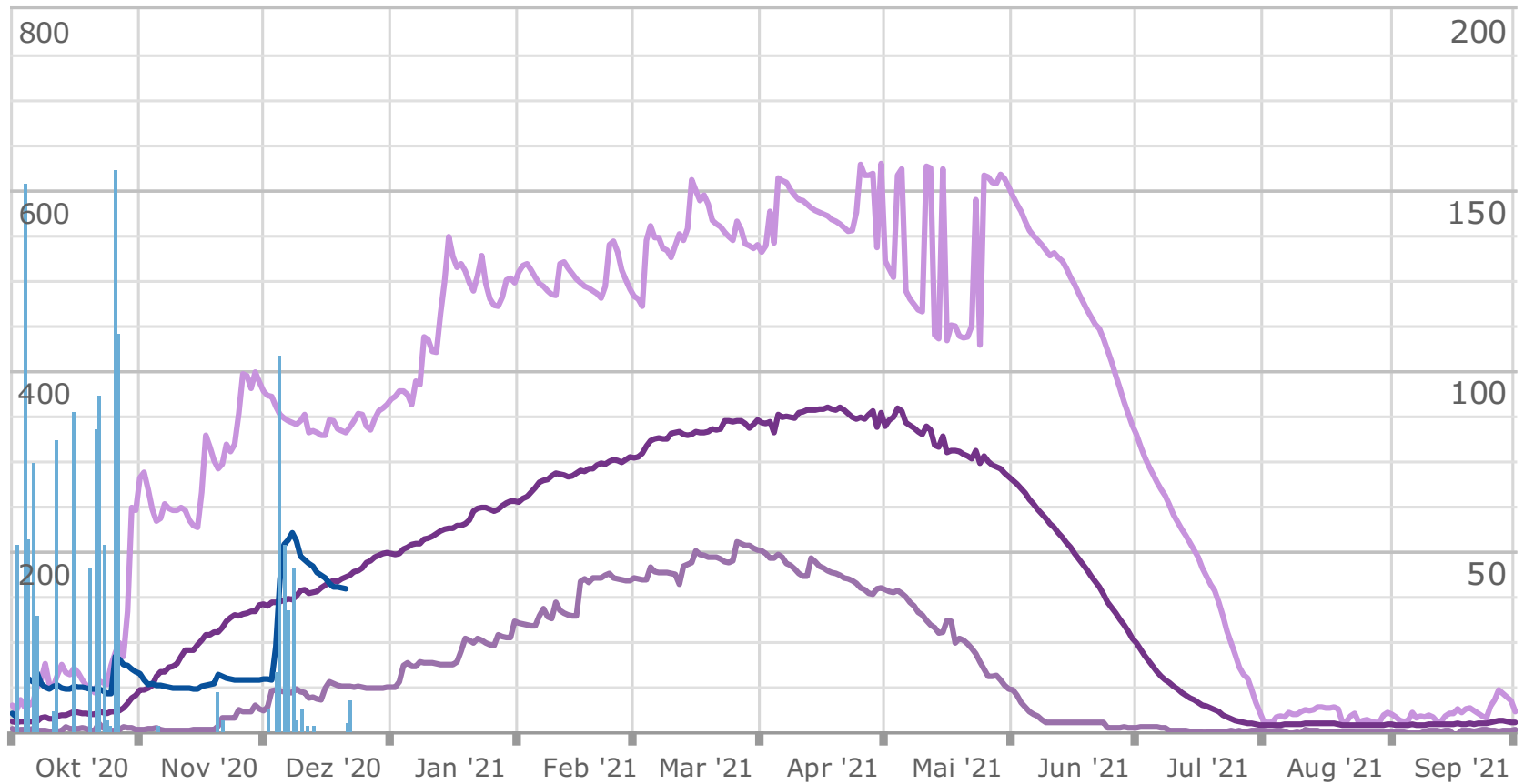


18.12.'20. gka  
18.12.'20. aka

# Cavanna 2420 m

Schneehöhe [cm]

Neuschnee 1 Tag [cm]



- Maximale Schneehöhe
- Durchschnittliche Schneehöhe
- Minimale Schneehöhe
- Schneehöhe
- Neuschnee 1 Tag





31.12.'20, Simi Schmid



18.12.'20, gka














# Le grotte di ghiaccio del Morteratsch

1

2

3



Sea Ice Index  
Sea Ice Extent, 1979-2016  
monthly median sea ice extent 1981-2010

Image © 2017 CNES/Airbus  
© 2016 Google  
Image © 2017 DigitalGlobe

Google





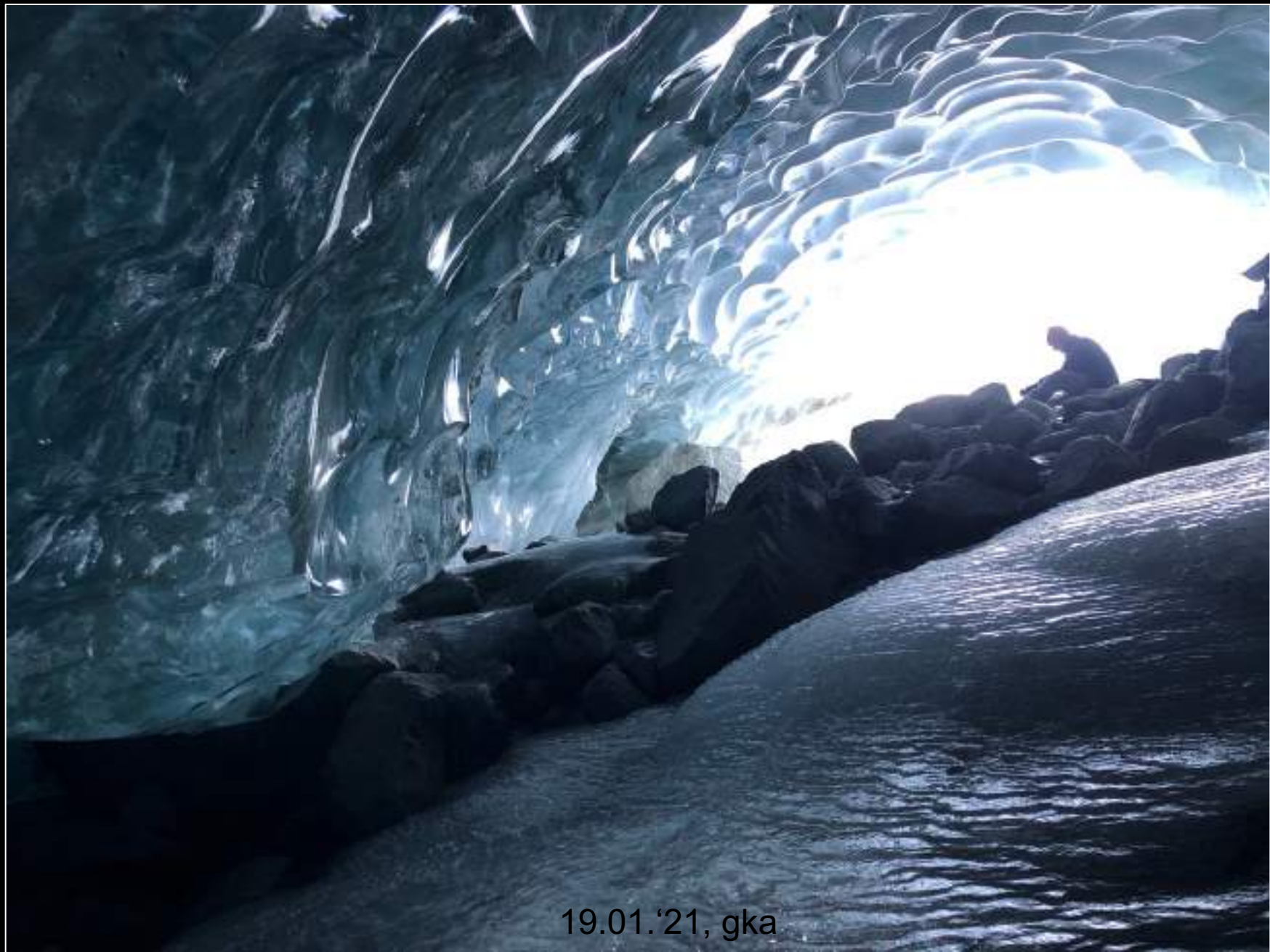












19.01.'21, gka





10.02.'21, gka





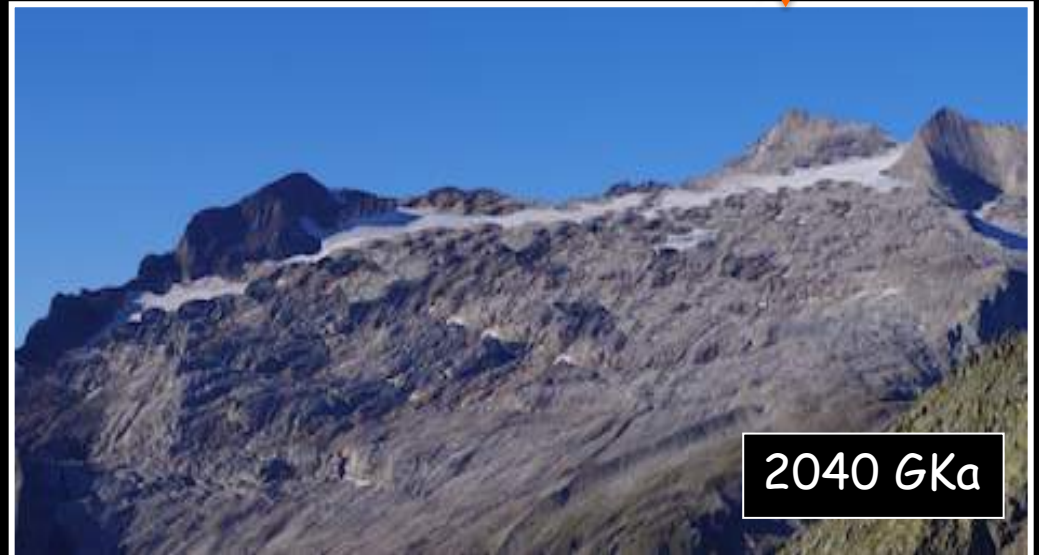
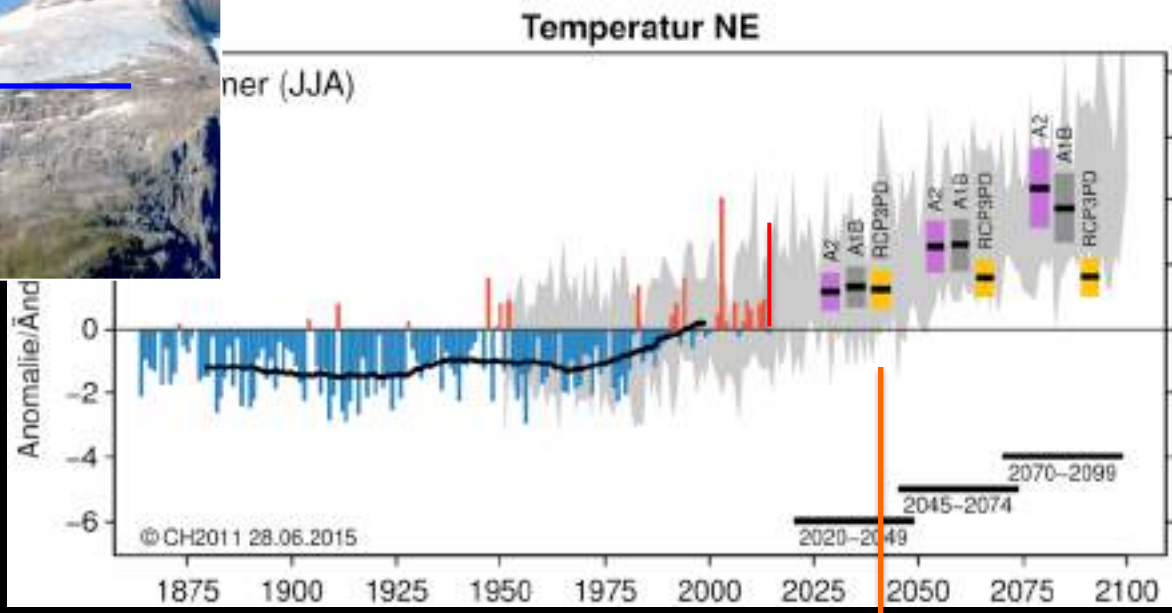
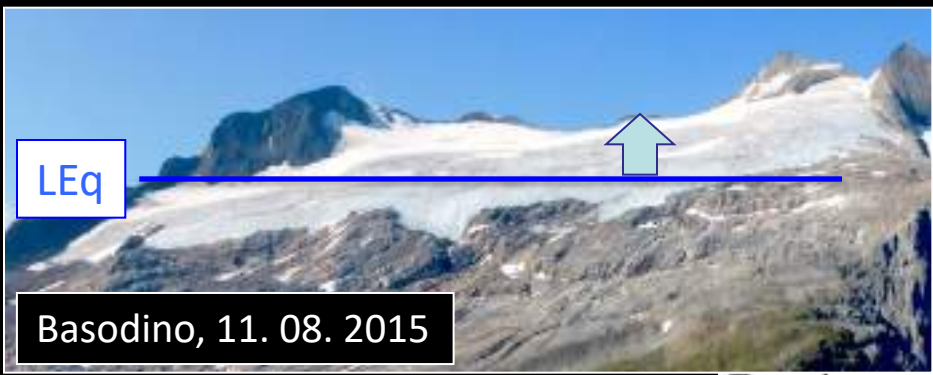




Ghiacciaio del Basodino durante l'ultima fase di lieve avanzamento,  
Con la forma del fronte lievemente convessa. 1982 gka



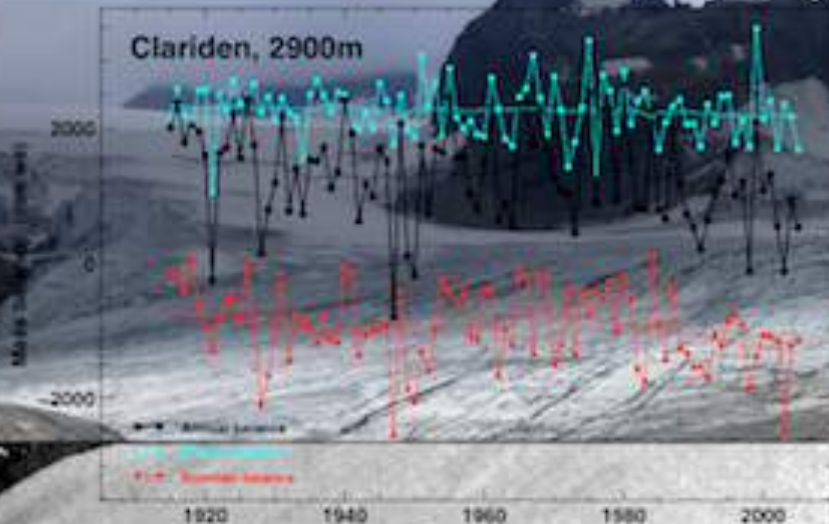




# 100 Jahre Gletscher-Klima Studien am Clariden

Weltweit längste  
Gletscher-Massenbilanz-  
Serie 1914-2014

Clariden, 2900m



Freitag 22.8.2014 ETH Zürich  
Scientific Symposium (in English)  
*Anmeldung erwünscht*

Sa/So 23./24.8.2014  
Exkursion zur  
Claridenhütte und zum Gletscher  
*Anmeldung erforderlich*

[www.snow-ice-permafrost.ch](http://www.snow-ice-permafrost.ch)

# NORTH WATER PROJECT



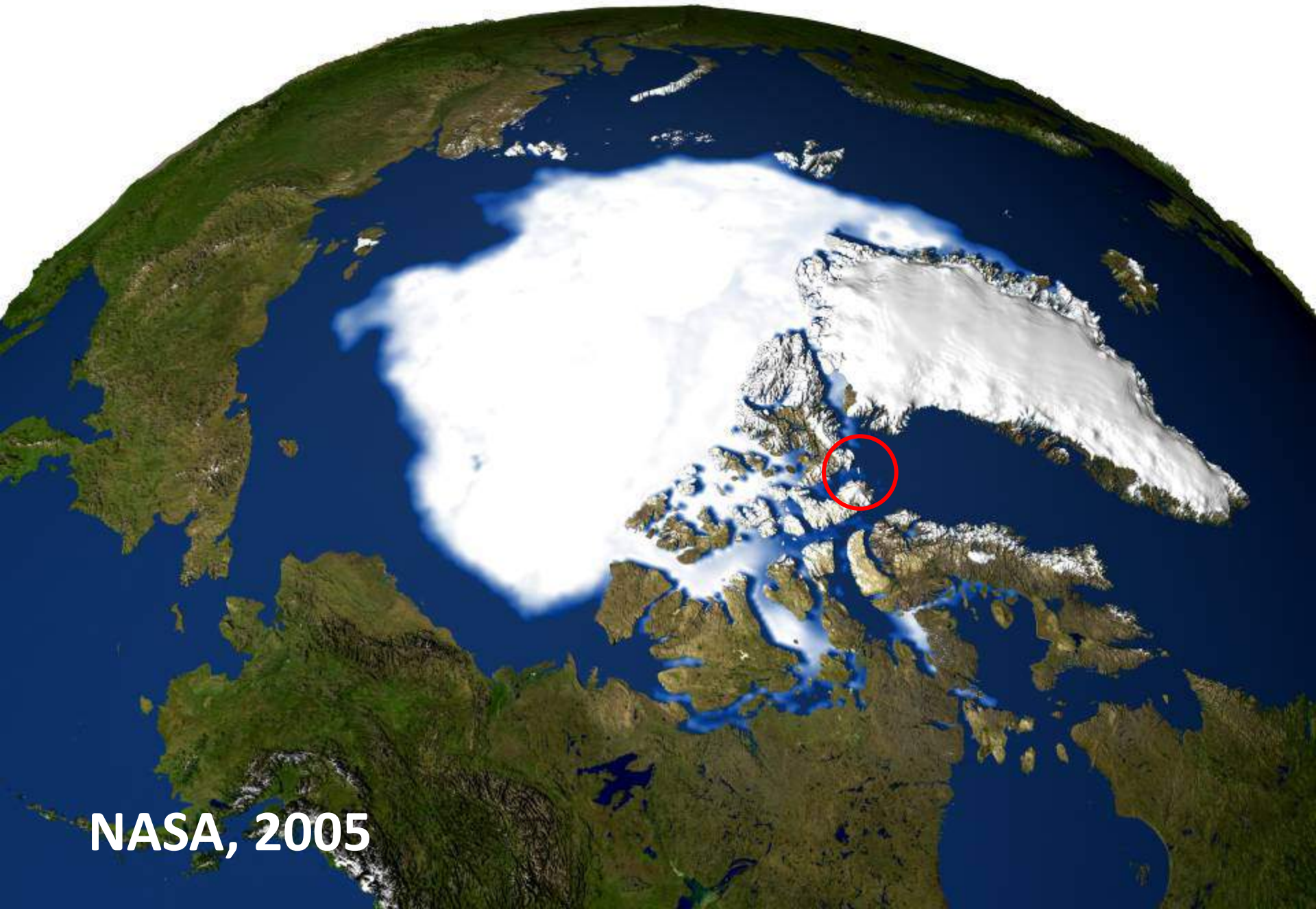
Isola Coburg

Image IBCAO  
Image U.S. Geological Survey  
Image Landsat / Copernicus

Google Earth

73°12'27.14"N 77°08'55.10"W elev. 421 m alt 1904.78 km

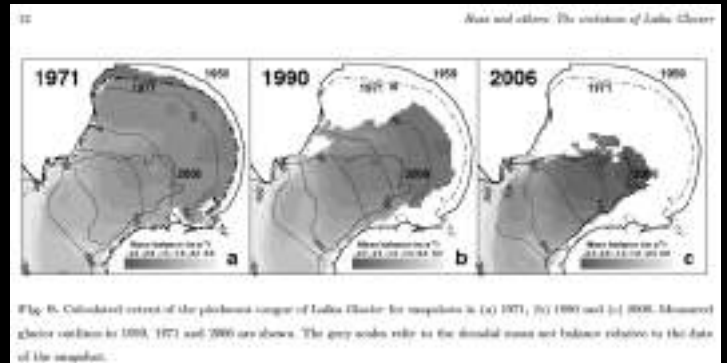
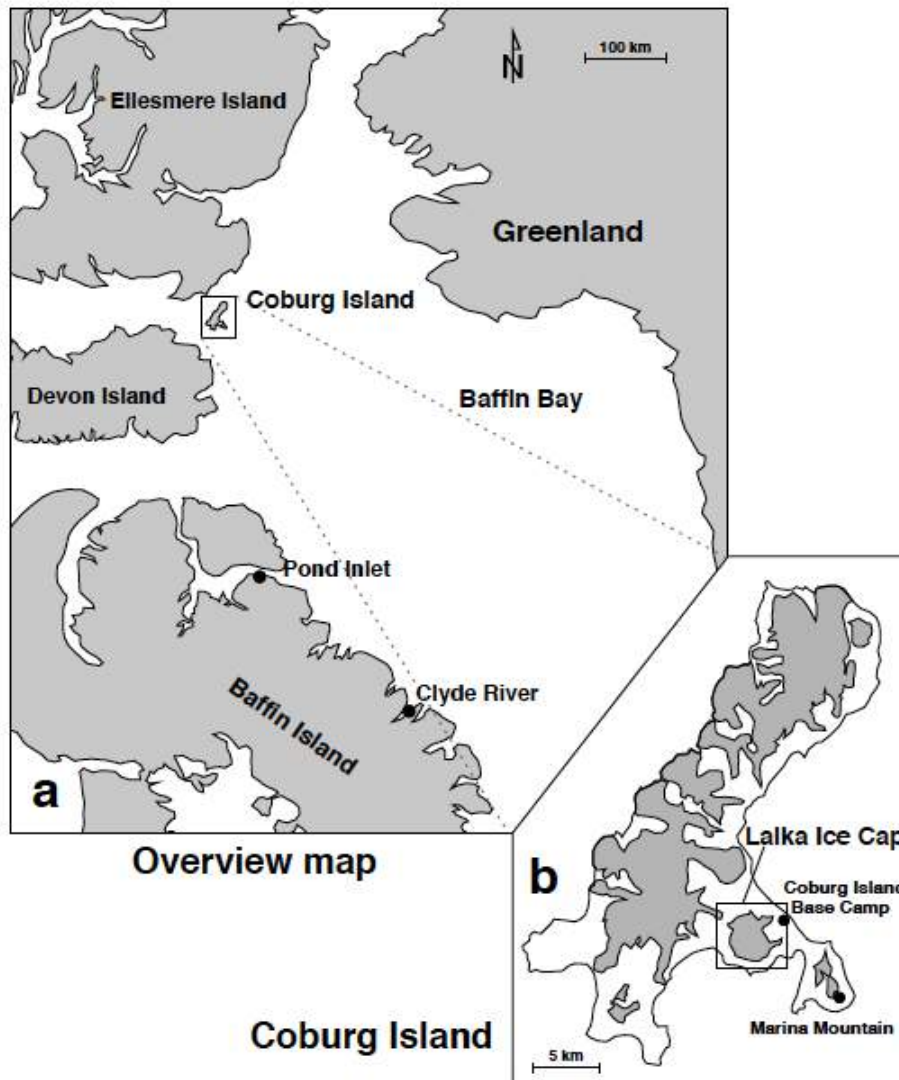




NASA, 2005

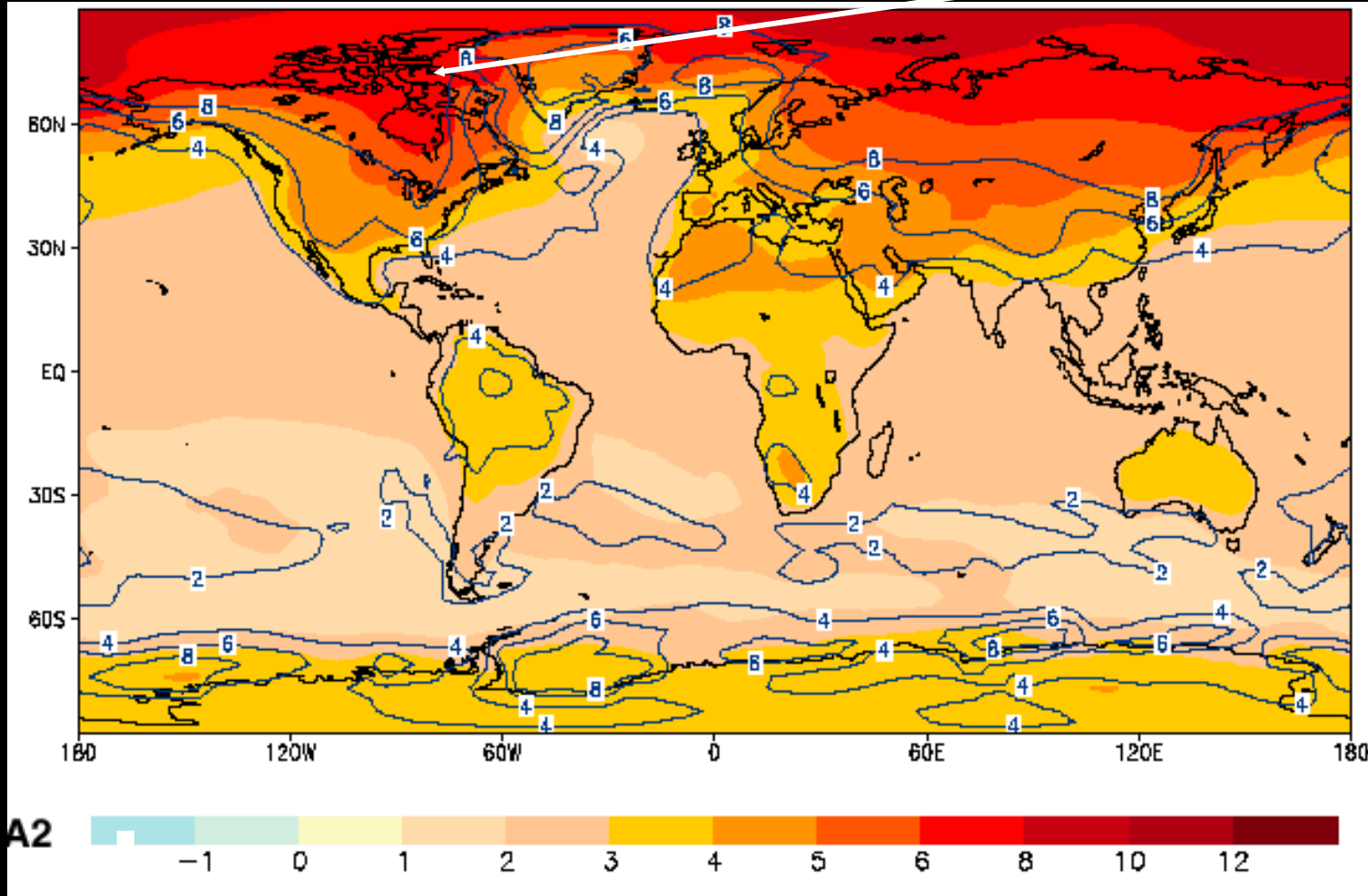






# Possibile scenario 2070

Artico  
'74 e '75



Variazione della temperatura rispetto al periodo 1961/90 in ° C (Fonte IPCC 2002)

# Coburg Island 1974







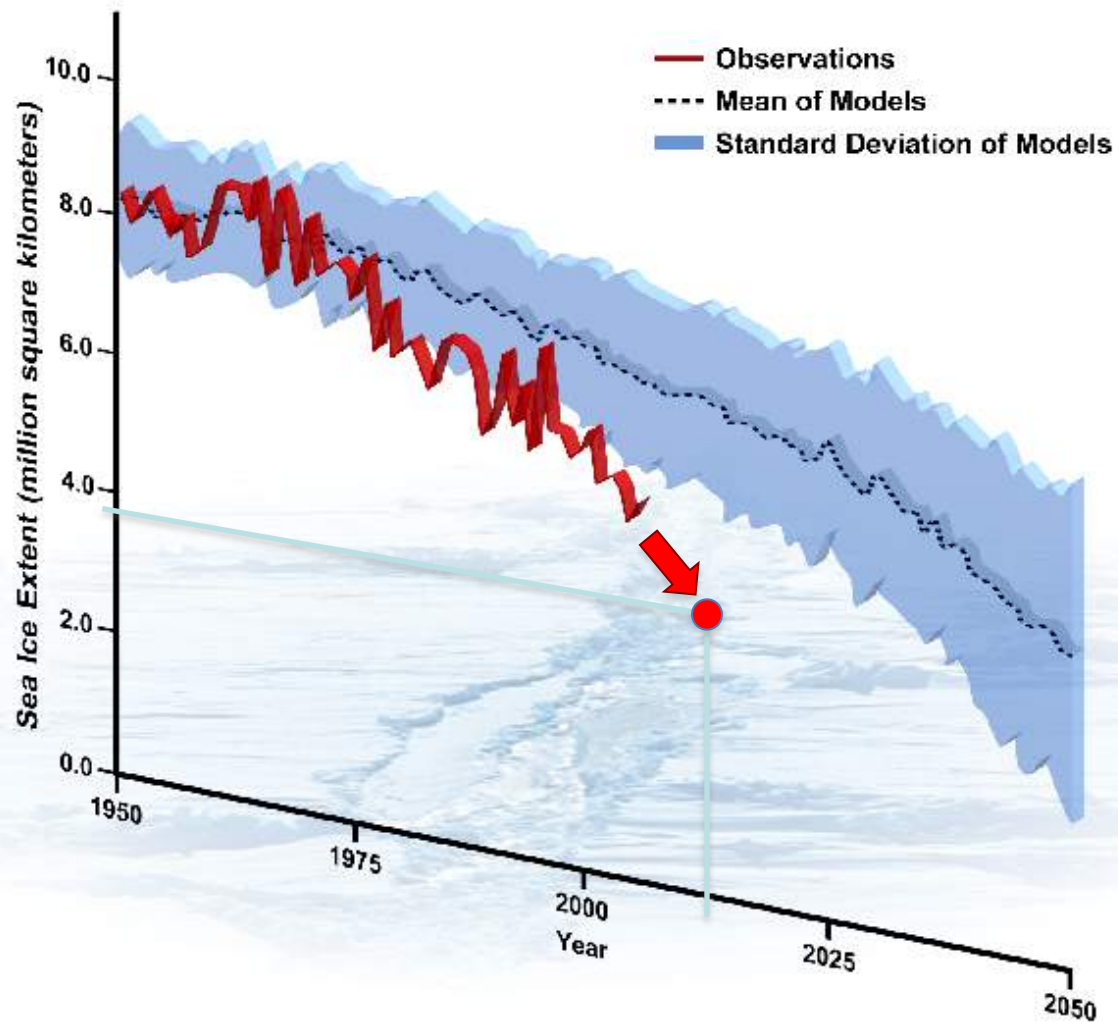








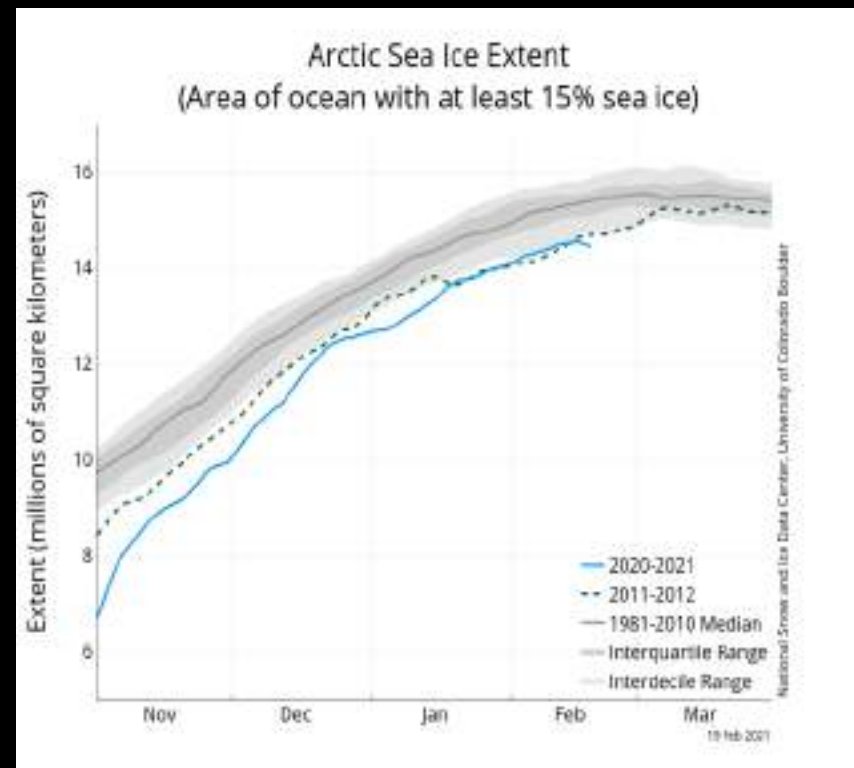
## Arctic September Sea Ice Extent: Observations and Model Runs



NSIDC data/UCAR image



# Sea Ice Concentration, 19 Feb 2021



# Cosa è ?

Coburg V 1974



Foto N.Deichmann

Cane Laika dopo la tempesta  
Coburg V 1974

ADATTAMENTO!



Foto N.Deichmann



Laika

Coburg Island 76 grN CA

1975





Coburg Island 76 grN CA

1974









Coburg Island 76 grN CA

1975



Coburg Island 76 grN CA

1975



# Conseguenze nell'Artico: aumenta

**l'erosione costiera**

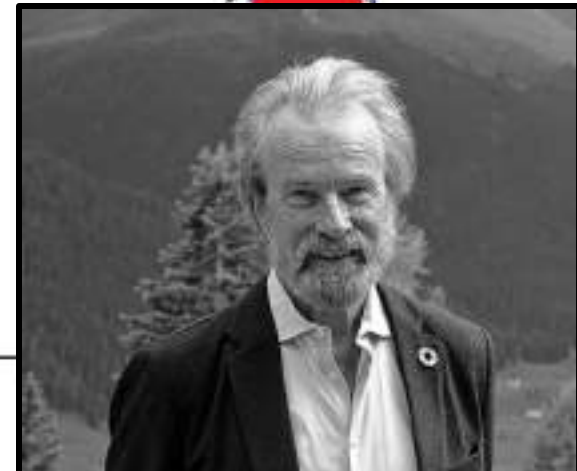
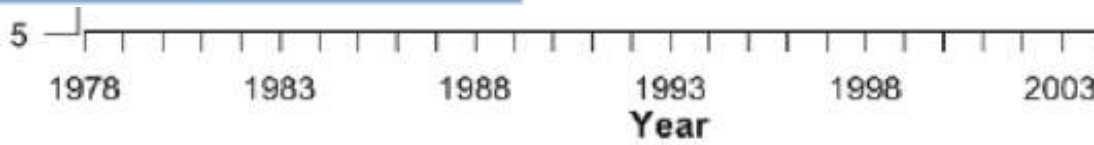
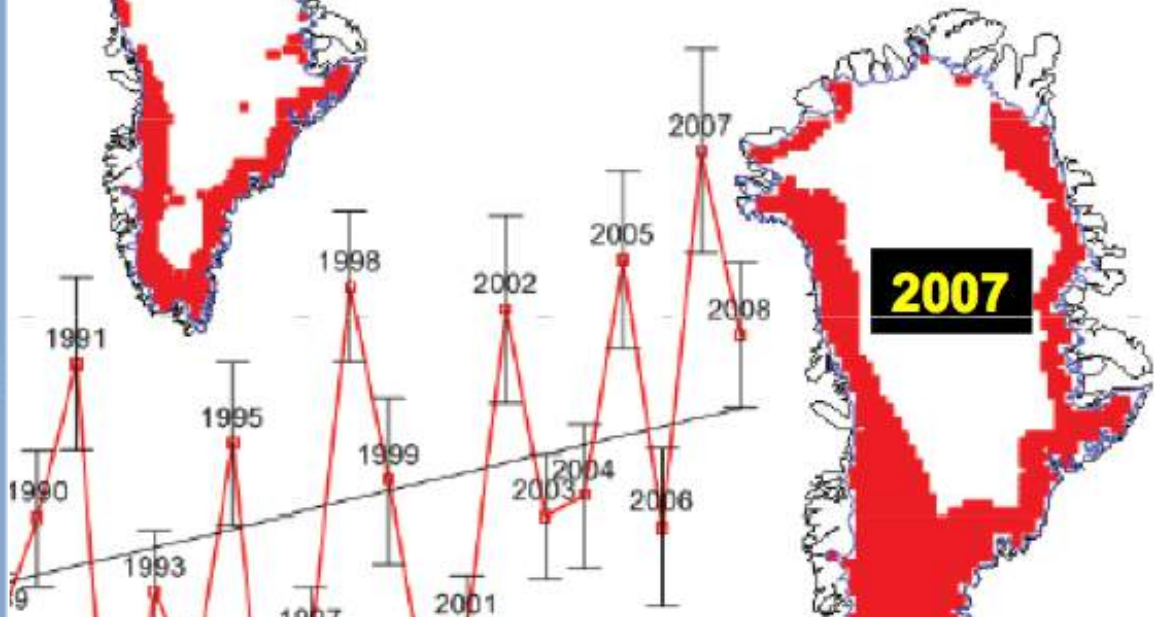
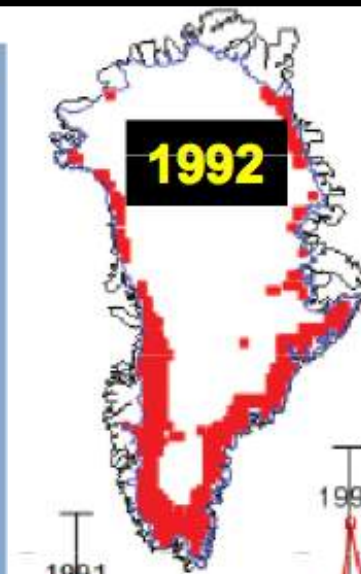
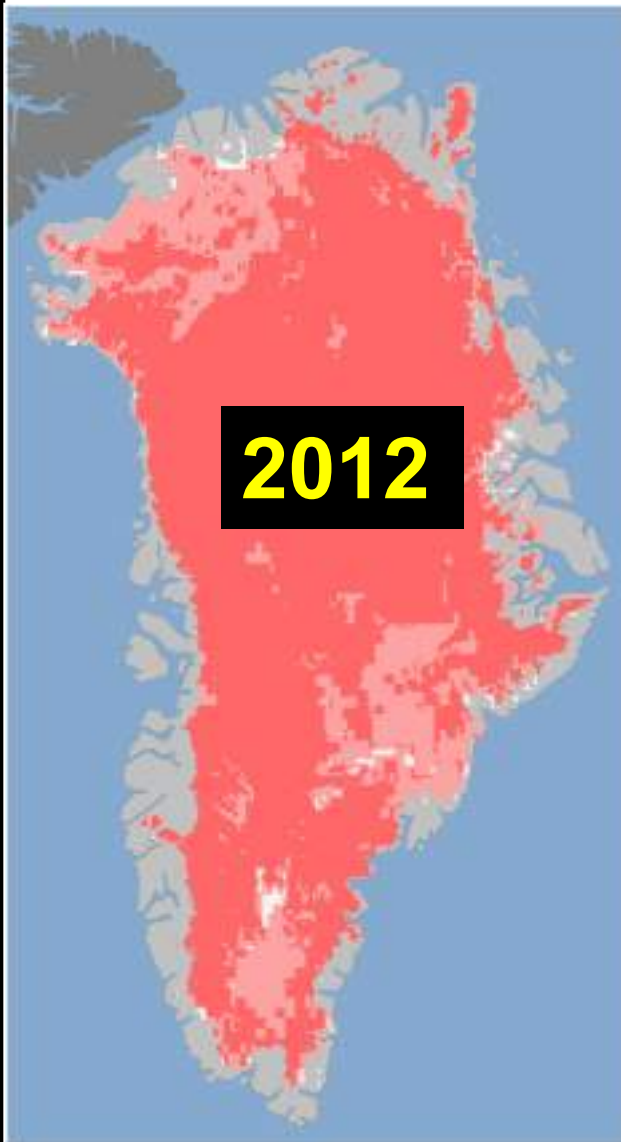


**l'acqua di fusione dei ghiacci**



**Grazie alla lubrificazione  
sul letto del ghiacciaio,  
questo „slitta“ più veloce**

Area di fusione estiva





WIKIPEDIA  
The Free Encyclopedia

- Main page
- Contents
- Current events
- Random article
- About Wikipedia
- Contact us
- Donate

- Contribute
- Help
- Learn to edit
- Community portal
- Recent changes
- Upload file

- Tools
- What links here
- Related changes
- Special pages
- Permanent link
- Page information
- Cite this page
- Wikidata item

Print/export

Article Talk

Read Edit View history

Search Wikipedia



# Konrad Steffen

From Wikipedia, the free encyclopedia.

**Konrad "Koni" Steffen** (2 January 1952 – 8 August 2020) was a Swiss **glaciologist**, known for his research into the impact of global warming on the Arctic.

**Contents** [hide]

- 1 Early life and education
- 2 Career
- 3 Research
- 4 Awards
- 5 Personal life and death
- 6 References
- 7 External links

## Early life and education [edit]

Konrad Steffen was born on January 2, 1952 in Zurich, Switzerland to Ernst and Maria Steffen, née Kurzinski.<sup>[2]</sup> His father was a fashion designer and his mother ran an accounting firm.<sup>[2]</sup> As a child, Steffen aspired to become an actor, but his father insisted he pursue a profession first.<sup>[3]</sup>

Steffen attended ETH Zurich, from which he received his undergraduate degree or Diplom in 1977 and a Doctor of Science degree (Ph.D.) in natural sciences in 1984. In 1986, Steffen went to the United States as a visiting fellow at

**Konrad Steffen**



Konrad Steffen in 2012

**Born** 2 January 1952



WSL-Institut für Schnee-  
und Lawinenforschung SLF

Lawinenbulletin und  
Schneesituation

Schnee

Lawinen

Naturgefahren

Gebirgsökosysteme

Permafrost

Projekte

Publikationen

Services und Produkte

Über das SLF

< Zurück

## Prof. Dr. Jürg Schweizer



Funktion Mitglied der Direktion, Leiter Forschungseinheit, Leiter  
SLF  
Forschungseinheiten

Kontakt [schweizer\(at\)slf.ch](mailto:schweizer(at)slf.ch)  
+41 81 417 01 64

WSL-Institut für Schnee- und Lawinenforschung SLF  
Flüelastrasse 11  
7260 Davos Dorf

Standort [Davos Da B 2 23](#)

### Academic Education

1989: Dr. sc. nat., ETH Zürich (Ph.D. in Glaciology)

# Dr. Martin Schneebeli

# BENVENUTO



Funktion      Leiter Forschungseinheit, Senior Scientist  
Schnee und Permafrost

Kontakt        [schneebeli\(at\)slf.ch](mailto:schneebeli(at)slf.ch)  
+41 81 417 01 81

WSL-Institut für Schnee- und Lawinenforschung SLF  
Flüelastrasse 11  
7260 Davos Dorf

*Processi fisici nella neve, il nevato ed il ghiaccio. Metamorfosi e meccanica della neve:  
il suo trasporto con il vento. Flussi d'energia nel manto nevoso.  
Glaciologia, idrologia, scienze dell'atmosfera, clima polare, rilevamento a distanza.  
Capoprogetto del gruppo svizzero alla spedizione MOSAIC.*

## Teaching

ETHZ /M. C. Schneebeli: The course provides an introduction to the relevant processes and physics required for key cryospheric applications covering snow and firn metamorphism, snow mechanics, wind transport of snow and energy and mass fluxes in the snowcover. The topics are relevant for glaciology, hydrology, atmospheric science, polar climatology and remote sensing.